

If your school is missing from the Original BRAG™
Antenna Ranking of Schools Report, this document shows you

How to BRAG™ Rate your School

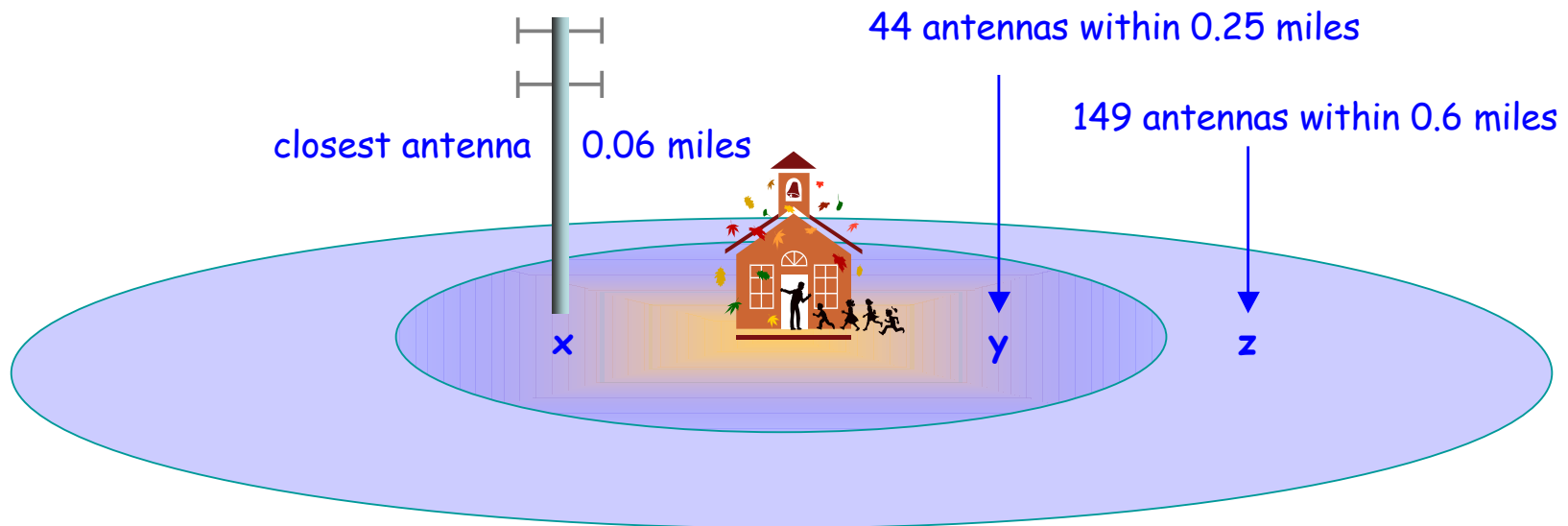


Table of Contents

Part One: How to find Antennas near your Favorite School

Part Two: How to BRAG™ Rate your School

Part Three: How to BRAG™ Rate your City

Part Four: Just the Beginning . . .



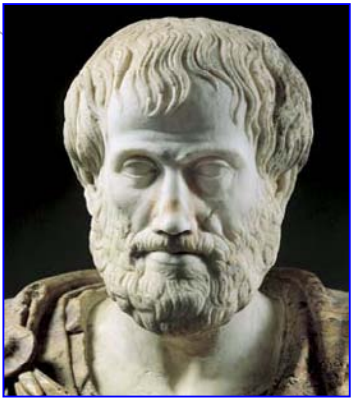
Baltasar Gracian

*Without courage,
wisdom bears no fruit.*

Part One

How to
near

find Antennas
your Favorite School



Aristotle

*All who have meditated on
the art of governing mankind
have been convinced that the
fate of empires depends on
the education of youth.*



How to find Antennas near your Favorite School

1 Write down the address of the school you are interested in. If you don't know the address visit www.greatschools.com or www.50states.com. Here is an example for www.50states.com.

1 States and Capitals

Place your pointer on a file folder to view a pop up of [state abbreviation](#) and capital city name. Click on a file folder to reach state's outlined links page.



- | | | | |
|-----------------------------|-------------------------------|--------------------------------|--------------------------------|
| Alabama | Illinois | Montana | Rhode Island |
| Alaska | Indiana | Nebraska | South Carolina |
| Arizona | Iowa | Nevada | South Dakota |
| Arkansas | Kansas | New Hampshire | Tennessee |
| California | Kentucky | New Jersey | Texas |
| Colorado | Louisiana | New Mexico | Utah |
| Connecticut | Maine | New York | Vermont |
| Delaware | Maryland | North Carolina | Virginia |
| Florida | Massachusetts | North Dakota | Washington |
| | | | West Virginia |
| | | | Wisconsin |
| | | | Wyoming |

- 2**
- > 50states School Directory: [Find your school!](#) **NEW!**
 - > Admission to Statehood: [January 9, 1788](#)
 - > Ancestry and Genealogy: [Connecticut State Database](#)
 - > Area: 5544 sq.mi., 48th Land 4845 sq.mi., 48th Water 698 sq.mi., 37th Shoreline 618mi., 18th
 - > Area Codes: [203 - 860](#)
 - > Biographies: [Famous Nutmeggers](#)
 - > Bird: [Robin](#) [50states List](#)
 - > Border States: [Regional List](#) - [Massachusetts](#) - [New York](#) - [Rhode Island](#)
 - > Cam World: [Live Web Cams](#)
 - > City Guides: [Connecticut City Guides](#)
 - > Classified Ads: [Shop50states Classifieds](#)
 - > Climate: [Connecticut](#)
 - > Colleges, Universities: [Connecticut Colleges](#), [Connecticut Business Schools](#), [Connecticut Art Schools](#)
 - > Community and Technical Colleges: [Connecticut Community Colleges](#)
 - > Community Pages: [50states List](#)
 - > Constitution: [5th State](#)
 - > County Profile: [County Map](#) 8 Counties
 - > Courts: [Judicial System](#)
 - > Current Events: [Connecticut News Headlines](#)
 - > Department of: [Education](#) [Certification](#)
 - > Driving: [DMV](#)



3

Connecticut Schools		
A	B	C
Andover Ansonia	Ashford Avon	Bridgewater Bristol Broad Brook Brookfield Brooklyn Burlington
Baltic Barkhamsted Beacon Falls Berlin Bethany Bethel	Bethlehem Bloomfield Bolton Bozrah Branford Bridgeport	Colebrook Columbia Catskill Coventry Cromwell
Ganaan Greenwich Hamden Hartford Meriden	Chaplin Cheshire Chester Clinton Colchester	East Granby East Haddam East Hampton Eastford Easton

4

Berlin Schools	
A	B
Berlin High School - More Info Students/Teachers: 1060 / 74 Grades: 9 - 12 139 Patterson Way Berlin, CT 06037	Catherine M Mcgee Middle - More Info Students/Teachers: 779 / 61 Grades: 6 - 8 899 Norton Rd Berlin, CT 06037
Emma Hart Willard School - More Info Students/Teachers: 662 / 38 Grades: Pre-School - 5 1088 Norton Rd Berlin, CT 06037	Homebound - More Info Students/Teachers: NA / NA Grades: Pre-School - 12 238 Kensington Road Berlin, CT 06037
Richard D Hubbard School - More Info Students/Teachers: 331 / 20 Grades: Pre-School - 5 139 Grove St Berlin, CT 06023	



How to find Antennas near your Favorite School

2

Go to www.antennasearch.com and enter the street address for your school of interest.

Once address is entered, click



Start your search now ...

Street Address: City: State: Zip (Optional):

- All Towers (Existing and Future) and Antennas within 4 miles of your address will be returned -
(Database last updated on: 3/24/2010 - 1,954,631 Towers and Antennas Online!)

3

AntennaSearch will search for the address. This may take a few minutes. It will then return with the following information:

AntennaSearch.com
* Detailed Maps, Ownership Info, ...and much more

Address Confirmation

We found one location matching your search criteria
(Press PROCESS to Generate Report or press TRY AGAIN for a different address)

Target Location (4.0 mile radius will be used) Select?

3825 Wisconsin Ave NW, Washington, DC 20015

Home | FAQs | Contact | Press/News

© 2004-2009 by General Data Resources, Inc.

If more than one address is given, select the one that applies to your school and click



Welcome to AntennaSearch.com!

Your Free online source for ...

- Detailed information on over 1.9 Million Towers and Antennas in the US!
- Includes Google Maps, Ownership Details, Contact Information and more ...
- Pinpoint Existing Towers, Future Towers and even small, hidden antennas to determine Cell Phone coverage.

Start your search now

Street Address: City: State: Zip (Optional):

- All Towers (Existing and Future) and Antennas within 4 miles of your address will be returned -
(Database last updated on: 3/24/2010 - 1,954,631 Towers and Antennas Online!)

- Frequency and Power data now online! -
(New information included on all reports and downloads)

Get detailed info on ...

- Existing Towers:** Registered and Non-Registered structures where antennas are placed. Towers may be used for various services including Cellular, Paging, Microwave and others.
- Future Towers:** Newly filed (or pending) applications to construct new towers. Application info includes location coordinates and detailed ownership data.
- Antennas:** The actual emitters of radio signals. Antennas can be placed on towers (multiple) or can be installed stand alone on top of existing buildings. Stand alone antennas are small (well below 200 ft). You may also check multiple antennas to determine which cell phone carriers are located on a particular tower.

Use it for ...

- Cell Reception:** Even if you have the best cell phone on the market, poor carrier coverage can render it useless. Before you sign up for service, find out whether your cell phone carrier (Cingular, T-Mobile, Verizon, etc.) has good or poor coverage in a given area.
- Research and Planning:** Whether you are doing private or commercial research, being able to quickly and easily map tower and antenna locations can be invaluable. Use antennasearch to explore tower densities, antenna co-location and much more...
- Other Uses?:** Your imagination is the limit! Feel free to explore and generate as many reports as you need! If you have any questions or special needs simply write us!

Home | FAQs | Contact | Press/News

© 2004-2009 by General Data Resources, Inc.



How to find Antennas near your Favorite School

4

Once the search is completed, you will see this page.

This page indicates . . .

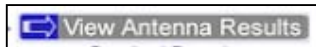
the number of towers

the number of new towers

the number of antennas

found within a search radius, which in this example is 3 miles. The search radius may be different for each search.

For detailed results click



Your report is ready!
* Use links below ...

Purpose	Status	Date	Owner	Assignor
New Reg	Granted	09/15/1997		
Owner Change	Granted	01/22/2001	BellSouth CINGUL NEW CIP	NEW CIP LLC

Report Viewer ...

Your AntennaSearch Report is ready!
(3825 Wisconsin Ave NW, Washington, DC 20016)

- Results Summary -

Search Radius reduced to 3. miles
(High number of Antennas Detected!)

75 Tower Structures Detected!

1 New Tower Applications Detected as of 04/04/10!

892 Antenna Locations Found!

- Detailed Results (Maps, Owners, etc.) -

Click for Tower Results -->

View Tower Results

[Download Records](#)

Click for Antenna Results -->

View Antenna Results

[Download Records](#)



How to find Antennas near your Favorite School

5

View Antenna Search Results will provide a map and a list of antennas as shown below. Note the list of antennas may continue for several pages.

Antenna Search Results!

Alert! 892 Antennas found within 3.00 miles of 3825 Wisconsin Ave NW, Washington, DC 20016.

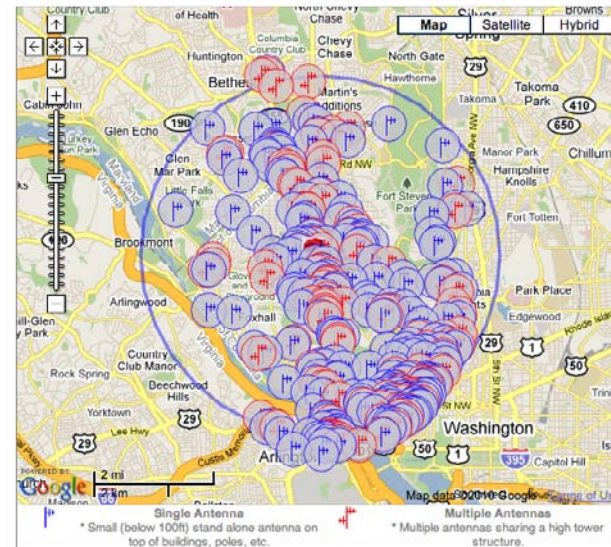
Info! The NEAREST Antenna is .09 miles away and is owned by Teltronics.

Site Type	Site Num	Antenna Owner	Height	Dist		
Multiple	(1)	Cabs, Inc.	NA	.25 miles		
		Cabs, Inc.	112 feet	.25 miles		
		Nextel Communications Of The Mid-atlantic, Inc. Whitlock, David N.whitlock, Jennifer.kapsidelis, Billzaccarino,terry.fischer, Richard Dba Colony	98 feet	.24 miles		
		Radio	98 feet	.24 miles		
		Capitol Cab Coop Association Inc	112 feet	.24 miles		
		Metrocom Inc	112 feet	.24 miles		
		Fort Myer Construction	112 feet	.24 miles		
		Logisticare Inc	98 feet	.24 miles		
		(2)		Clearwire Spectrum Holdings Lli, Llc	100 feet	.33 miles
				Fibertower Network Services Corp.	100 feet	.36 miles
Nextel Communications Of The Mid-atlantic, Inc.	95 feet			.35 miles		
(3)		Nextel Communications Of The Mid-atlantic, Inc.	95 feet	.35 miles		
		Nextel Communications Of The Mid-atlantic, Inc.	75 feet	.36 miles		
(4)		Mercury Message Paging Inc	NA	.36 miles		
		Buttner Holdings Llc	NA	.38 miles		
		Map Paging Co Inc	663 feet	.42 miles		
		Wnncitywide Radio, Inc.	663 feet	.42 miles		
		William Calomiris Investment Corp	249 feet	.42 miles		
		Johnson Controls Inc	NA	.42 miles		
		Grant Park Care Center	NA	.42 miles		
		Dental Equipment Specialists Inc	449 feet	.42 miles		
		Fairfax, County Of	371 feet	.42 miles		
		Winstar Wireless Fiber Corp. (chapter 7 Debtor)	185 feet	.44 miles		
		Ajax Supply Inc	659 feet	.40 miles		
		Ajax Supply Inc	659 feet	.40 miles		
		Tolson Inc	NA	.42 miles		
		Virginia, Commonwealth Of Department Of State Police	663 feet	.42 miles		
		Ajax Supply Inc	659 feet	.40 miles		
		Metrocall Usa, Inc.	NA	.42 miles		
		Network Services, Llc Debtor-in-possession	659 feet	.42 miles		
		Paging Network Of America, Inc	NA	.42 miles		
		Network Services, Llc Debtor-in-possession	NA	.42 miles		
		Map Paging Co Inc	NA	.42 miles		
Map Paging Co Inc	NA	.42 miles				

Number of antennas within 3 miles

Distance of each antenna from address provided

Antenna Sites - (3825 Wisconsin Ave NW, Washington, DC 20016)



cont'd

Part Two

How to BRAG™ Rate your School

- ✓ BRAG™ Color Code ...
- ✓ BRAG™ Grade ...
- ✓ BRAG™ Ranking ...



H.G. Wells

*History is a race between
education and catastrophe*



BRAG™ Color Code your School

6

Once you have a list of antennas with their distances from your selected address you can begin to tabulate the data required for assessing your school's BRAG™ Color Code.

- x) **Closest Antenna:** Scroll down the entire list of antennas and record the closest antenna to your address. Important to scroll right to the end as the antennas are not necessarily in increasing order, although they may appear as such.
- y) **Number of Antennas within 0.25 miles:** Scroll down the list of antennas and count the number of antennas within 0.25 miles. Note that you need to scroll through the entire list as the distances are not always in sequence.
- z) **Number of Antennas within 0.6 miles:** Scroll down the list of antennas and count the number of antennas within 0.25 miles. Note that you need to scroll through the entire list as the distances are not always in sequence.

7

Closest Antenna (x): Assign the following colors to the closest antenna, if closest antenna is . . .

- within 0.06 miles - BLACK
- between 0.061 and 0.25 miles - RED
- between 0.26 and 0.6 miles - AMBER
- beyond 0.6 miles- GREEN



BRAG™ Color Code your School

8 Number of Antennas within 0.25 miles (y):

Assign the following color code for antennas within 0.25 miles:

- 13 or more antennas - BLACK
- 6 to 12 antennas - RED
- 1 to 5 antennas - AMBER
- 0 antennas- GREEN

9 Number of Antennas within 0.6 miles (z):

Assign the following color code for antennas within 0.6 miles:

- 76 or more antennas - BLACK
- 31 to 75 antennas - RED
- 6 to 30 antennas - AMBER
- 5 or less antennas- GREEN

10 You should now have three colors for your school for each of the 3 metrics: closest antenna (x), number within 0.25 miles (y), and number within 0.6 miles (z). Place these "colors" in order from green to black (fewest antennas to most antennas) and select **the middle (or median) color to represent your school**. For example: if your colors are green-green-red, the median color is green. If your colors are green-amber-black, the median color is amber, and if your colors are amber-red-black, the median color is red, and if your colors are amber - black - black, your median color is black.



BRAG™ Color Code your School

11 Take the colors you assigned to the closest antenna, the number within 0.25 miles, and the number between 0.6 miles. Now assign a number to each of the 3 colors as follows:
BLACK = 0, RED = 1, AMBER = 2, GREEN = 3.

12 Add up the numbers for the 3 colors. This is your total out of a possible high of 9 and a low of 0. To convert these totals to percentages divide by 9 or use the chart below:

total	9	8	7	6	5	4	3	2	1	0
%	100	89	78	67	56	44	33	22	11	0

This is your school's BRAG™ Grade. For example, if your 3 colors are green-amber-black you BRAG numbers are 3-2-0 which totals 5 out of 9 or a BRAG™ grade of 56%.

13 If you want to compare different schools, you can rank them according to their BRAG™ Grade, with the highest percentage being ranked #1 (best). For schools that are tied, the school with the fewest antennas within 0.25 miles would get a rank lower than the rest of the schools. You could use the same for the closest antenna and the number of antennas within 0.6 miles to differentiate between tied ranks.

14 Suggestion: Once you assessed your school you may want to assess all the schools in your city. By doing this you could also grade your city as shown in Part 3.



BRAG™ Color Code your School

Here is a table to help you organize your data for a particular school.

BRAG™ Rating	School Name	School Address	Date
Antenna Information from www.antennasearch.com	# (see page 10)	BRAG™ Color Code (see pages 10 & 11)	BRAG™ Weighting (see page 12)
closest antenna (miles)			
# antennas within 0.25 miles			
# antennas within 0.6 miles			



BRAG™ Grade & Rank your School

To compare multiple schools use the table below. This would make an interesting science project.

BRAG™ School Ranking	Schools in City, State	School Address	closest antenna (mi.)	# antennas within 0.25 miles	# antennas within 0.6 miles	BRAG™ School Color Code	BRAG™ School Grade (%)
1							
2							
3							
4							
24							
25							
BRAG™ City Grade and Color Code		maximum					
		average					
		minimum					

Part Three

How to BRAG™ Rate your City

- ✓ BRAG™ Color Code . . .
- ✓ BRAG™ Grade . . .
- ✓ BRAG™ Ranking . . .



Epictetus

We must not believe the many, who say that only free people ought to be educated, but we should rather believe the philosophers who say that only the educated are free.



BRAG™ Color Code & Grade your City

15

BRAG™ Color Code City: Once you have classified each school according to the school BRAG™ School Color Code, you can determine the color code for your city as follows:

- a) Count the number of schools that are color coded as **Green**, **Amber**, **Red**, and **Black**.
- b) The color classification that has the most schools in the BRAG™ Color Code for your City.
- c) For example, if you have a total of 40 schools in your city and 4 are **green**, 18 are **amber**, 16 are **red** and 2 are **black**, then the BRAG™ color code for your city is **amber**.
- d) In case of a tie, for example if 16 are **amber** and 16 are **red**, then the BRAG™ color code is **red** (worst of the two).

16

BRAG™ Grade City: To give your city a grade, take a weighted average of all the schools by multiplying the percentage of black schools by 0; red schools by 1; amber schools by 2; and green schools by 3. The average will provide the BRAG™ Grade for the City. See example below. The total is 160 and since the highest possible is 300, the percentage is 160/300 or 53% for the BRAG™ City Grade.

	# schools	% of schools	factor	weighted total
Black	2	5%	x 0	0
Red	16	40%	x 1	40
Amber	18	45%	x 2	90
Green	4	10%	x 3	30
Total	40	100%		160

BRAG™ City Grade based on Schools
160/300 = 53%



BRAG™ Rank your City

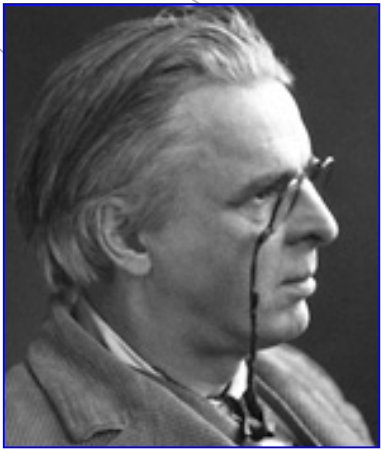
17 **BRAG™ Rank your City:** To compare your city with other cities that have also had schools BRAG™ color-coded, use the BRAG™ City Grade and place cities in decreasing order with the highest grade being ranked #1 (best).

18 **How does your city compare with . . .**

City, State	# schools	BRAG™ Grade	BRAG™ Color Code
Richmond, Virginia	178	87%	green
Nashville, Tennessee	109	83%	green
Sacramento, California	260	79%	amber
Columbus, Ohio	476	77%	amber
Austin, Texas	189	74%	amber
Albany, New York	55	64%	amber
Montpelier, Vermont	15	60%	red
Washington, D.C.	448	49%	amber
Honolulu, Hawaii	121	47%	red
Boston, Massachusetts	280	44%	amber

Part Four

This is just the beginning



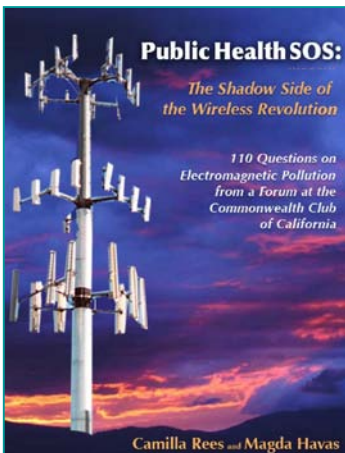
William Butler Yeats

*Education is not the
filling of a pail, but the
lighting of a fire.*

This is just the beginning . . .

JOIN US ON
facebook
CLICK HERE

If you would like to share your results with others or would like to discuss radio frequency radiation in schools join facebook at Campaign for Radiation Free Schools (<http://sn.im/veri4>)



For information about the shadow side of the wireless revolution read: *Public Health SOS* (www.amazon.com)